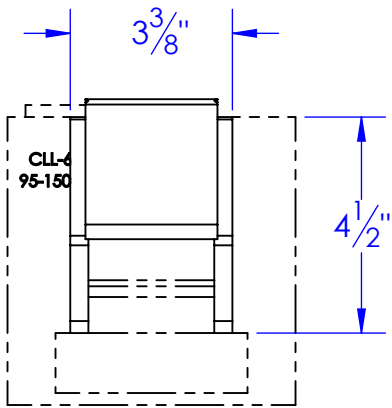
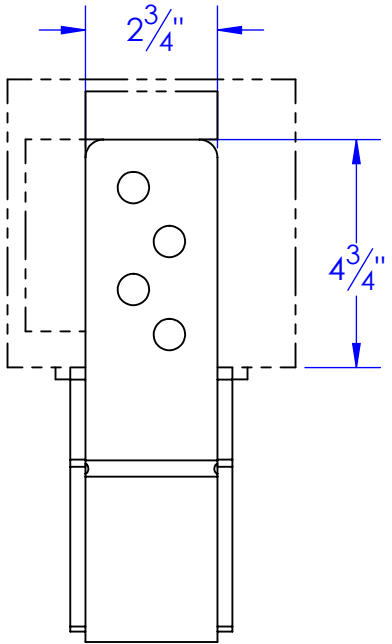
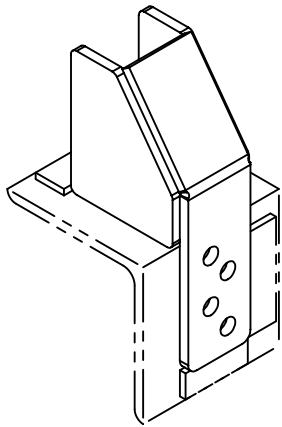
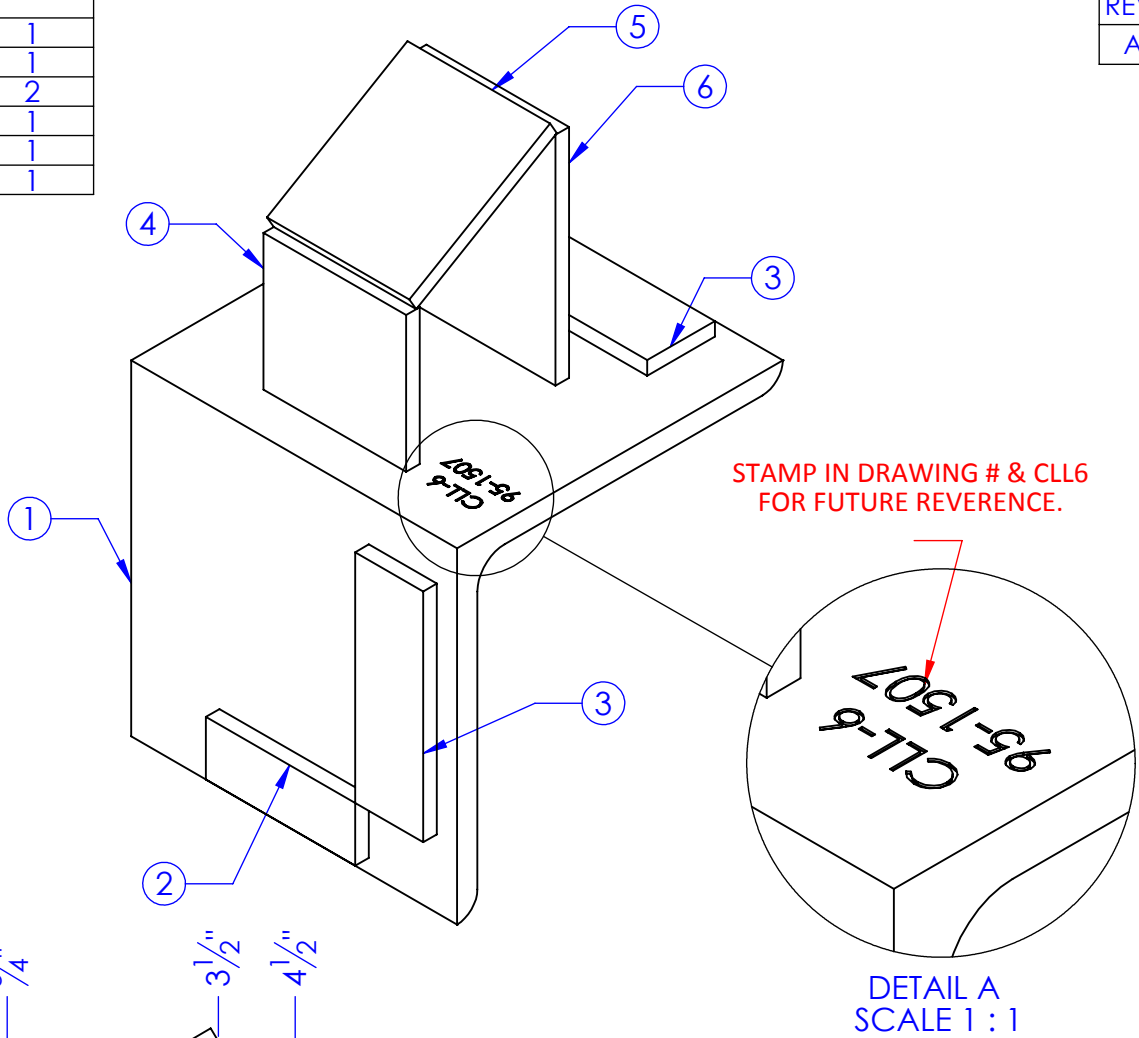
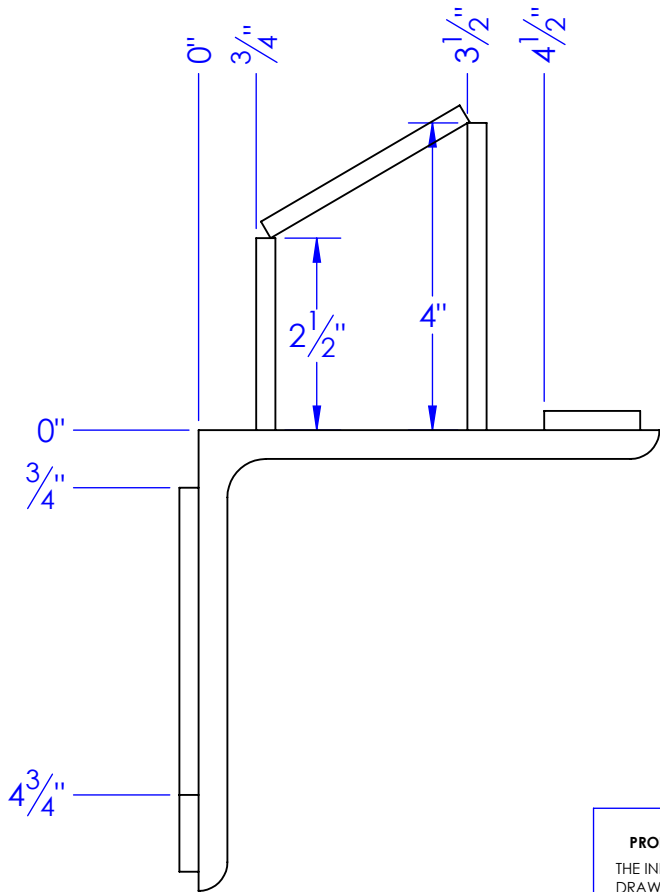
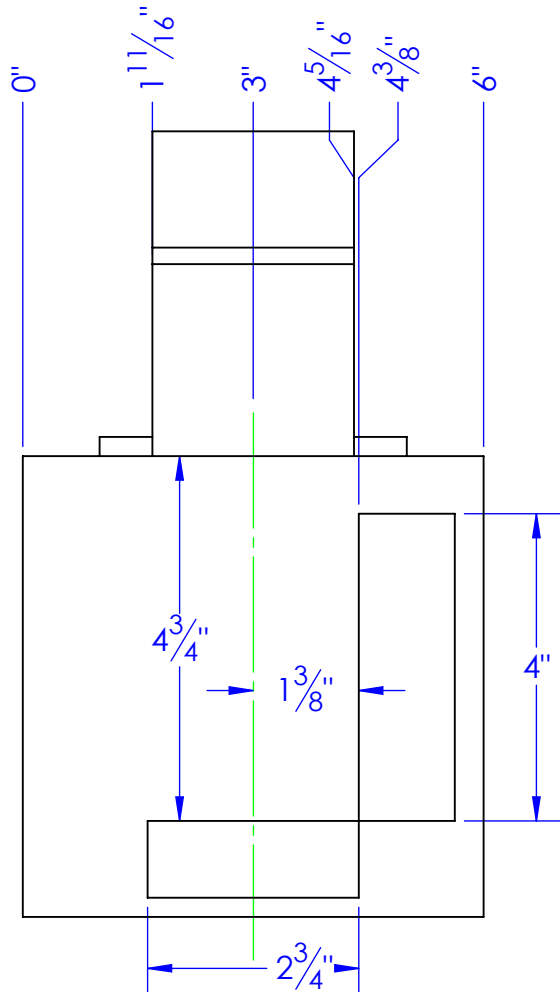
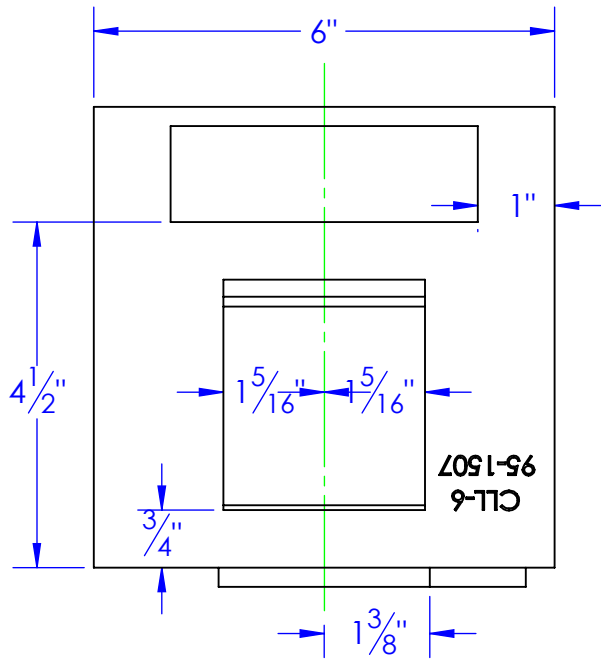


ITEM NO.	PART NUMBER	DESCRIPTION	MATERIAL	QTY.
1	AI 6 x 6 x .375 L 6 CLL6	LENGTH: 6"	AI 6x6x3/8	1
2	FI .25 X 1 L 2.75	LENGTH: 2-3/4"	FI 1/4" x 1"	1
3	FI .25 X 1.25 L 4	LENGTH: 4"	FI 1/4" x 1-1/4"	2
4	FI .25 X 2.5 L 2.625	LENGTH: 2-5/8"	FI 1/4" x 2-1/2"	1
5	FI .25 X 3 L 2.625	LENGTH: 2-5/8"	FI 1/4" x 3"	1
6	FI .25 X 4 L 2.625	LENGTH: 2-5/8"	FI 1/4" x 4"	1

REVISIONS			
REV.	DESCRIPTION	DATE	APPROVED
A	INITIAL RELEASE	3/29/2012	



PROPRIETARY AND CONFIDENTIAL
THE INFORMATION CONTAINED IN THIS DRAWING IS THE SOLE PROPERTY OF <INSERT COMPANY NAME HERE>. ANY REPRODUCTION IN PART OR AS A WHOLE WITHOUT THE WRITTEN PERMISSION OF <INSERT COMPANY NAME HERE> IS PROHIBITED.

UNLESS OTHERWISE SPECIFIED:
DIMENSIONS ARE IN INCHES
TOLERANCES:
FRACTIONAL $\pm 1/16$
ANGULAR: MACH ± 1 BEND \pm
TWO PLACE DECIMAL ± 0.10
THREE PLACE DECIMAL ± 0.05
MATERIAL
DO NOT SCALE DRAWING

		NAME	DATE	P.O. BOX 248, SABETHA KS. 66534 (785) 284-3674 FAX (785) 284-3931		
DRAWN		HEATH	4/3/2012	<div>TRIPLE C</div> <div>INC.</div>		
PART #						
ASM #		JIG-CLL6				
COMMENTS:				SIZE	DWG. NO.	REV
FIXTURE FOR WELDING UP CLL 6 CENTER				B	95-1507	A
				SCALE: 1:2.5		WEIGHT: 10.08